



Enterprise Portfolio Management

AGENDA

- ❑ Enterprise Portfolio Management (EPM): What and Why?**
- ❑ EPM Dimensions and Investment Model**
- ❑ EPM and Business Planning**
- ❑ Invigorate High Level Approach**
- ❑ Invigorate standard/Best practices**
 - Portfolio Management Approach**
 - Portfolio Management Governance Process**

Enterprise Portfolio Management: What and Why?

What is Enterprise
Portfolio Management?

The art and science of making decisions about investment mix and policy through building, managing and accessing company's product, projects and services.

Enterprise
Portfolio Management
Types:

- ✓ Business Portfolio
- ✓ Project Portfolio
- ✓ Application Portfolio
- ✓ Service Portfolio

Enterprise Portfolio Management Value

- ✓ Key enabler to provide the balance and support enterprise strategy and master planning
- ✓ Assist in taking effective strategic decisions about market offering and investment of company resources to optimize the value of existing assets.
- ✓ Achieve maximum return by balancing the portfolio among incremental and radical investments
- ✓ Anchoring by aligning business demands with goals and target architecture to initiate project proposals
- ✓ Key contributor in aligning business and IT strategies that direct the “to be” architecture - measure performance against goals and KPI
- ✓ Better decision about the best sourcing strategies for reducing operations budget while meeting BAU targets and managing risks effectively
- ✓ Creates a framework that enables predictability, flexibility, scalability and maintainability

EPM Dimensions Based on Business Stage Needs

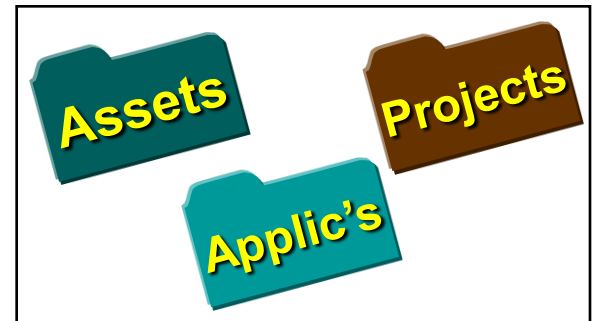
*High risk,
hopefully high
reward*

Transform
The Business
(TTB)



*Identify and size
projects critical
to established
strategy*

Grow
The Business
(GTB)



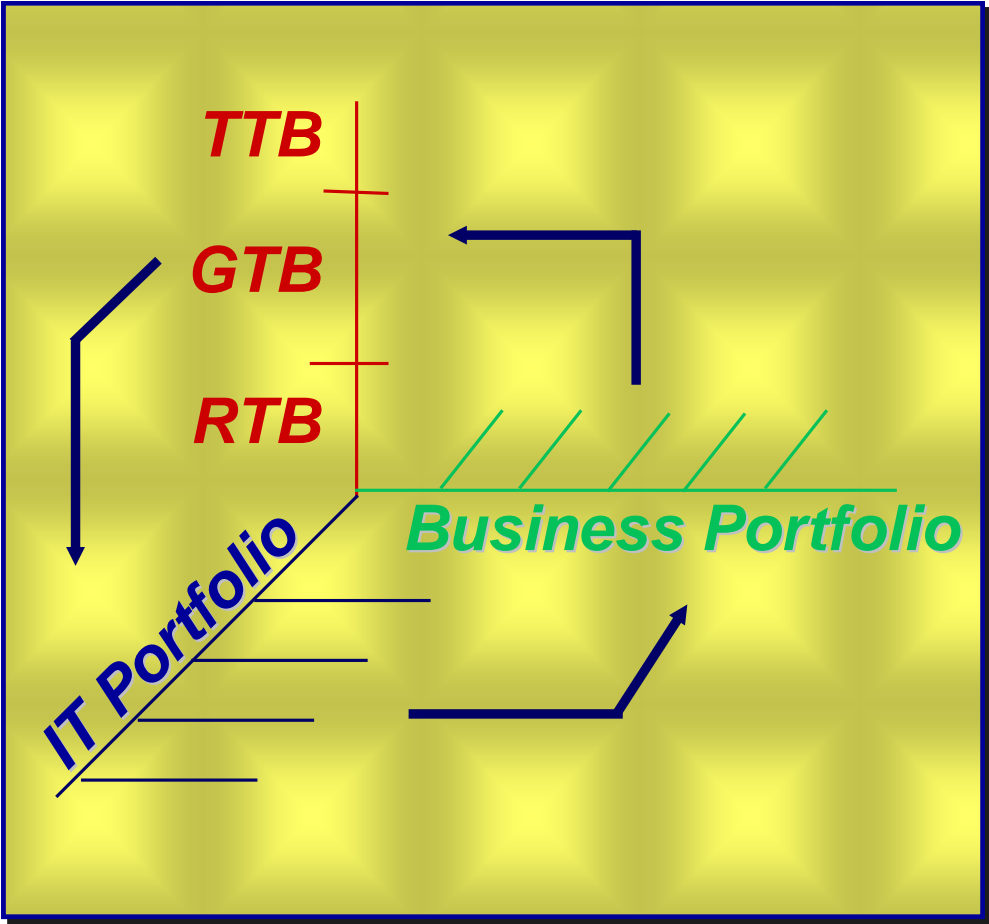
*Business
Continuity*

Run
The Business
(RTB)

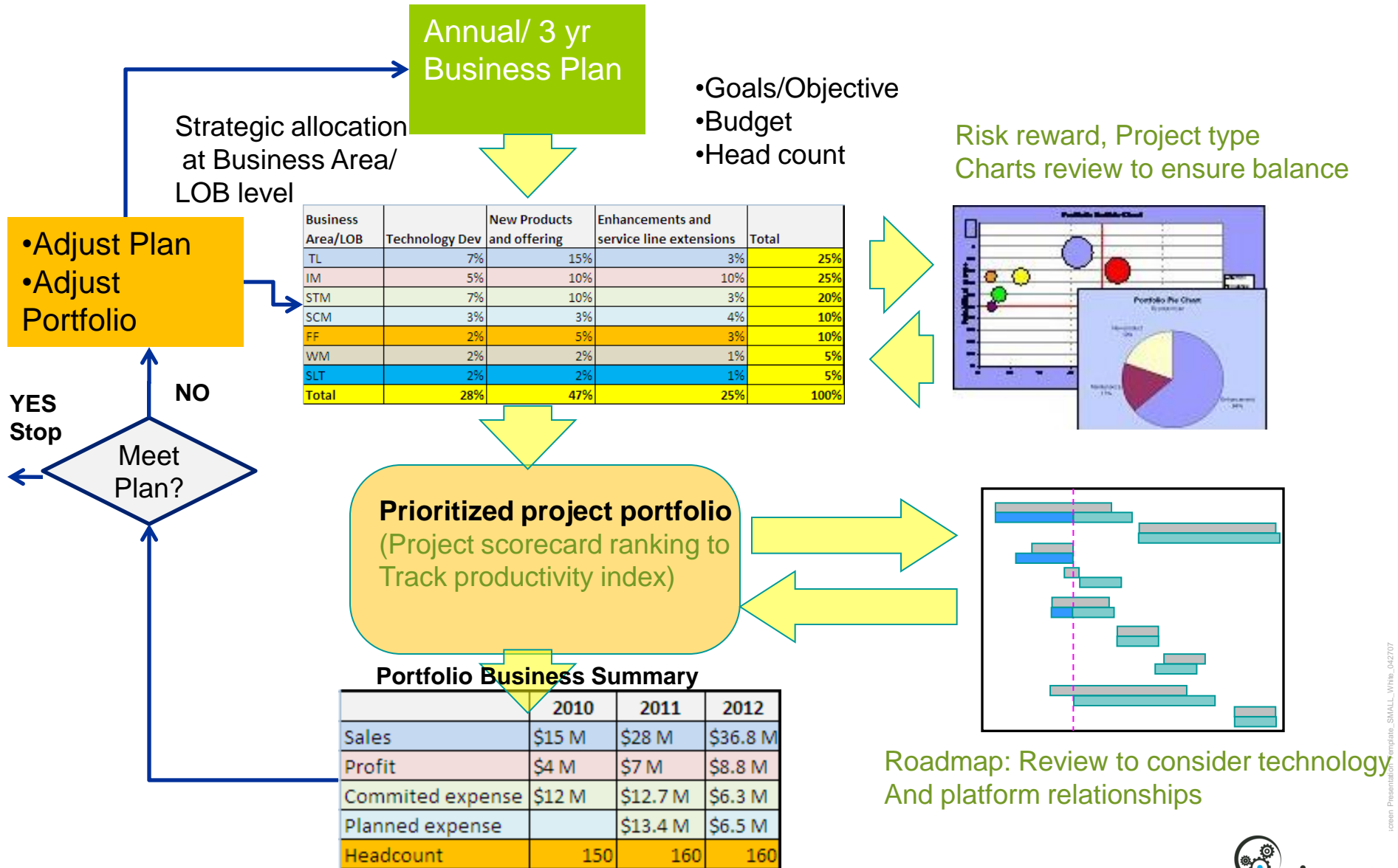


EPM and Investment Model (RTB, GTB, TTB)

EPM Dimensions



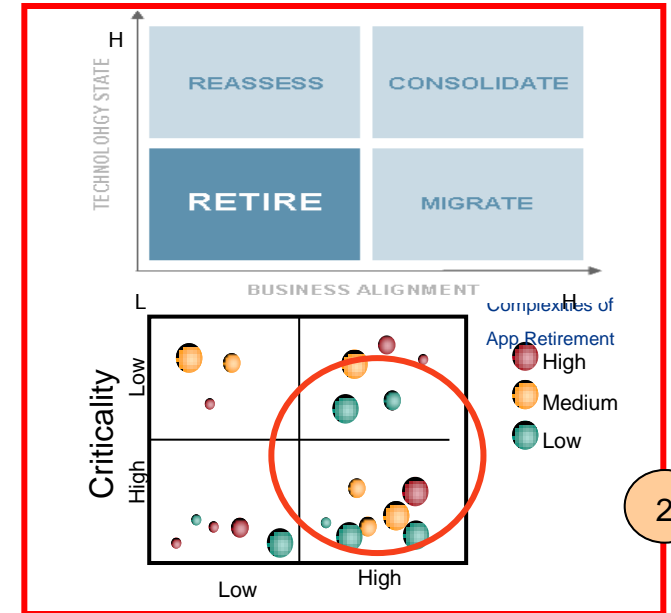
EPM and Business Planning



Invigorate Portfolio Management Approach

Administrative		Value Components			Technology & Lifecycle			Costing	Outsourcing
Application Identifier	Portfolio Manager	Business Value	Business Criticality	App Outage Impact	Architectural Compliance	Application Complexity	Future Action	Cost Efficiency	Outsourcing Suitability
Ranking Guide		1 - Low 2 - Med 3 - High	1- Nice to have 2 - Important 3 - Mission critical	3 - Tolerable 2 - Inconvenient 1 - Significant	1 - Low 2 - Med 3 - High	See Application Questionnaire		1 - Low 2 - Med 3 - High	See Outsourcing Suitability Questionnaire
Weightage		25%			25%			25%	25%
SIM-1	SV	3	3	1	1	5	Maintain	3	3
CSC-2	AK	2	2	3	3	6	Maintain	2	4
PCS	LD	3	1	1	3	7	Retire	3	2
IMS	MN	1	2	2	1	3	Invest	1	4
DISC	CS	2	2	1	3	2	Maintain	3	3
TMSHT	DF	3	3	3	2	5	Invest	3	2
BIP	JB	3	2	2	2	3	Replace	2	5
BAP	MD	1	2	1	1	6	Maintain	2	3
WHIP	MN	1	1	3	3	7	Invest	1	2
CST	SV	3	3	1	3	3	Maintain	3	1

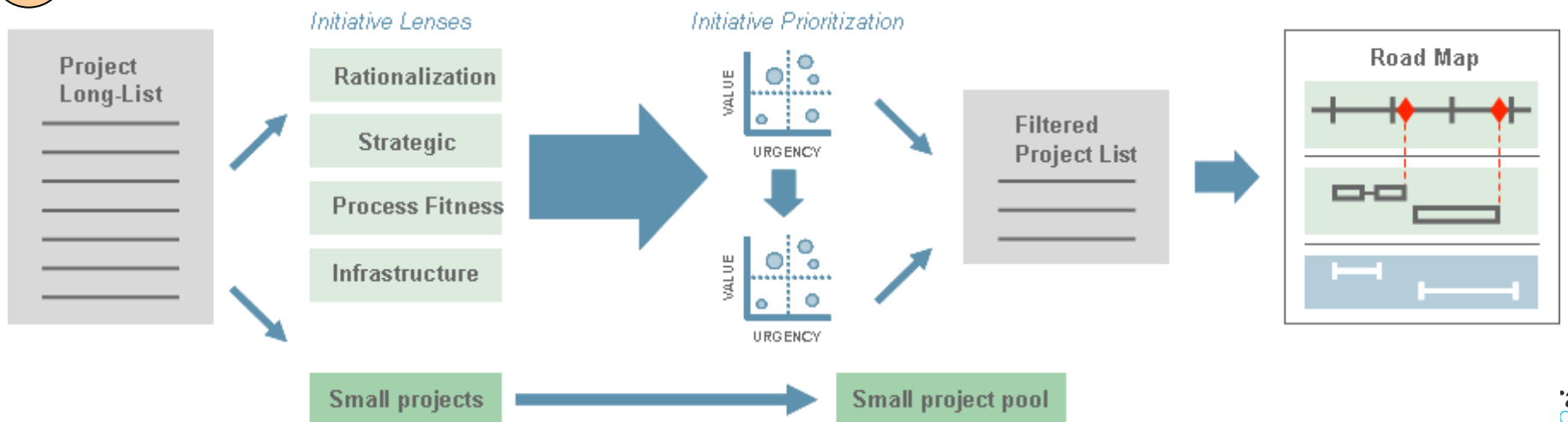
1



2

(Application and Services) data assessment (1) is turned into Decision matrices (2) to generate a list of initiatives to be prioritized by Portfolio Mgmt process (3)

3



Invigorate Portfolio Management Governance Process

